

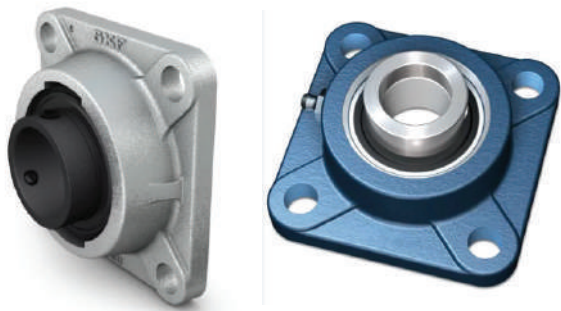
# DISCOVER SKF BEARINGS AND UNITS FOR YOUR INDUSTRIAL NEEDS!



EST 1825  
KARIMJEE

SKF (Svenska Kullagerfabriken AB) proudly presents a comprehensive range of Y-Bearings and units meticulously engineered to excel in diverse industrial environments. Whether you require precise positioning, space optimisation, or reliable performance, our bearing solutions are designed to meet your requirements with unparalleled quality and efficiency.

Explore our versatile range of **Y-Bearing and unit offerings:**



**Flange Unit Bearings (FY/UCF):**

Perfect for limited space applications, offering ease of mounting and exceptional performance.



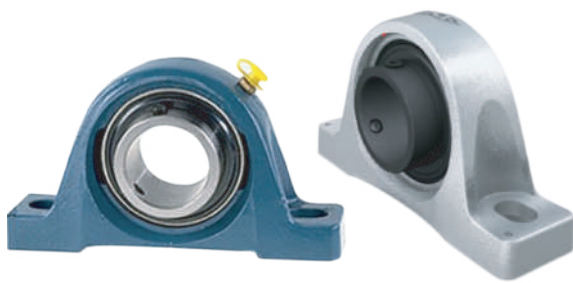
**Flanged Y-Bearing Units (FYT/UCFL):**

Combining a bearing unit with a flanged housing ensures sturdy support and convenient installation.



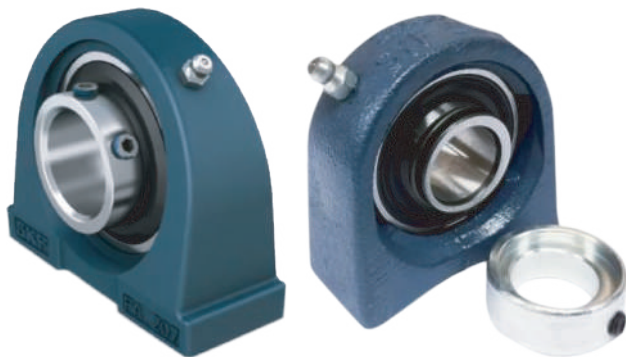
**Flanged Bearing Units with a round flange (FYC/UCFC):**

Ideal for various applications, providing reliable support with a unique flange design.



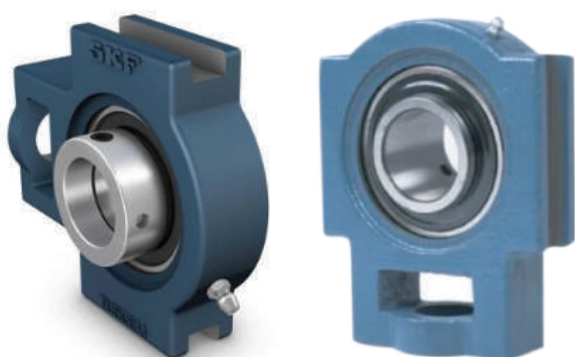
### **Pillow Block Units (SY/UCP):**

Designed for precise alignment and support, offering robust construction for reliable performance.



### **Pillow Block Bearing Units with a flange (SYF/UCPA):**

Offering the same reliability as SY units, with added convenience for mounting.



### **Take-Up Bearing Units (TU/UCT):**

Adjustable units allow for easy shaft elongation or contraction compensation, ensuring optimal performance.



### **Versatile Insert Bearings (YAR, YET, YAT, YEL, YSA/UC - INSERT BEARING):**

Seamlessly integrate with our housing units, tailored to various application needs.

At SKF, we understand the diverse demands of industrial operations. That's why our Y-Bearings and Units are meticulously crafted to deliver exceptional performance, reliability, and ease of maintenance across various industries, including agriculture, food and beverage, mining, construction, and manufacturing.



# Ball Bearings



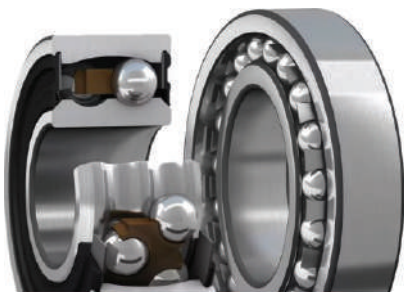
## **Deep Groove Ball Bearings:**

Versatile bearings suitable for a wide range of applications, offering low friction and high-speed operation.



## **Angular Contact Ball Bearings:**

Designed to accommodate combined radial and axial loads, providing excellent performance in high-speed applications.



## **Self-Aligning Ball Bearings:**

Offering superior misalignment capability, ensuring smooth operation even in challenging conditions.

## Thrust Bearings



### **Thrust Bearing:**

Designed to support axial loads in one direction, providing reliable performance and durability.



### **Angular Contact Thrust Ball Bearing:**

Ideal for applications requiring high axial stiffness and precision.

## Roller Bearings



### **Cylindrical Roller Bearings:**

Providing high radial load capacity and excellent rigidity, suitable for heavy-duty applications.



### **Needle Roller Bearings:**

Compact, lightweight bearings offer high load-carrying capacity, perfect for applications with limited space.



### **Taper Roller Bearings:**

Designed to support high radial and axial loads, providing smooth operation and long service life.



### **Spherical Roller Bearings:**

Offering high radial and axial load capacity with the ability to accommodate misalignment, ensuring reliable performance in demanding environments.

## **Thrust Roller Bearings**



### **Cylindrical Roller Thrust Bearing:**

Providing high thrust capacity and stiffness, suitable for heavy axial loads in limited space applications.



### **Needle Roller Thrust Bearings:**

Compact, lightweight bearings that accommodate high axial loads in restricted spaces.



### **Taper Roller Thrust Bearings:**

Offering high thrust capacity and stiffness, ensuring smooth operation under heavy axial loads.



### **Spherical Roller Thrust Bearing:**

Designed to accommodate heavy axial loads and misalignment, providing reliable performance in challenging conditions.



# **BEARING ACCESSORIES, ADAPTER SLEEVES, AND PLUMMER BLOCKS.**

## **Bearing Accessories:**

### **Locknuts, Lock Washers, and Locking Clips:**

SKF's range of locknuts, lock washers, and locking clips ensures secure and reliable bearing mounting, preventing unintended loosening and maintaining shaft alignment.

### **Withdrawal Sleeves:**

SKF withdrawal sleeves facilitate easy dismounting of bearings from shafts, simplifying maintenance procedures and reducing downtime.

## **Adapter Sleeves:**

### **Adapter Sleeves for Metric Shafts:**

SKF adapter sleeves provide a secure and precise fit for bearings on metric shafts, allowing for easy installation and removal without the need for additional tools.

### **Adapter Sleeves for Inch Shafts:**

Designed for use with inch-sized shafts, SKF adapter sleeves ensure proper alignment and support for bearings in a variety of industrial applications.







## Plummer Blocks:

### **SNL and SE Series Plummer Blocks:**

SKF SNL and SE series plummer blocks offer robust housing solutions for bearings, providing exceptional stability and support in demanding operating conditions.

### **SAF and SAW Split Plummer Blocks:**

SKF SAF and SAW split plummer blocks enable easy assembly and disassembly, reducing maintenance time and costs while ensuring reliable bearing support.

### **SBD and THD Plummer Blocks:**

SKF SBD and THD plummer blocks feature a modular design for easy customization, allowing for flexible housing configurations to meet specific application requirements.

Trust SKF's bearing accessories, adapter sleeves, and plummer blocks to enhance the performance and reliability of your machinery. With SKF's expertise and high-quality products, you can ensure smooth operation and minimize downtime in your operations.

# Power Transmission - Unlock Reliable Power Transmission Solutions with SKF!

Discover SKF's comprehensive range of power transmission components designed to keep your operations running smoothly and efficiently. From chains and sprockets to V-belts, pulleys, taper lock bushes, and couplings, SKF offers premium-quality solutions for all your power transmission needs.



## **Chains and Sprockets:**

**Roller Chains:** Robust and durable, SKF chains are engineered to deliver reliable performance in various industrial applications, ensuring smooth power transmission.



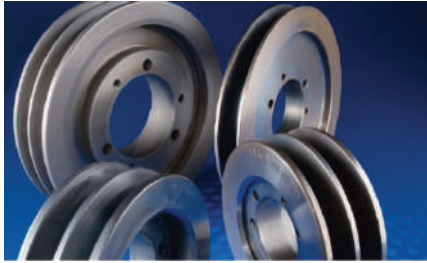
## **Sprockets:**

Precision-engineered sprockets are designed to work seamlessly with SKF chains, providing efficient power transmission with minimal wear and tear.



## **V-Belts:**

SKF V-belts offer superior flexibility and durability, delivering efficient power transmission while reducing vibration and noise in your machinery.



### **Pulleys:**

SKF pulleys are meticulously crafted to provide precise alignment and smooth operation, ensuring optimal power transmission and extended belt life.



### **Taperlock Bushes:**

Offering secure shaft locking and easy installation, SKF taperlock bushes provide a reliable solution for mounting pulleys, sprockets, and other components onto shafts.



### **Couplings:**

SKF couplings are engineered to transmit torque efficiently while accommodating misalignment and dampening vibration, ensuring smooth and reliable power transmission in your machinery.

Whether in manufacturing, mining, construction, or any other industry that relies on efficient power transmission, SKF has the expertise and products to meet your needs. Our power transmission components are trusted by industries worldwide for their quality, performance, and durability.

# SKF MAINTENANCE TOOLS & BEARING GREASES.

Elevate Maintenance Efficiency with SKF Maintenance Tools & Bearing Greases!

SKF offers a comprehensive range of maintenance tools and bearing greases engineered to enhance the reliability and performance of your machinery. From bearing fitting to alignment and condition monitoring, SKF provides the tools to optimise maintenance operations and prolong equipment life.

This refined structure ensures a logical flow and easy navigation for the reader, allowing them to find the information they need quickly.



## **Bearing Fitting Tools:**

### **Bearing Fitting Tool Kit TMFT 36:**

Simplify installation delivery with SKF's comprehensive fitting tool kit, ensuring precise and efficient mounting for optimal performance.



## **Induction Heaters:**

### **TWIM15, TIH 30, TIH 100, TIH 200:**

SKF's induction heaters provide safe and efficient heating for bearings and other components, facilitating easy installation and minimising downtime.



### **Alignment Tools:**

#### **Shaft and Belt Alignment Tools TMFT 24:**

Achieve accurate shaft and belt alignments with SKF's alignment tools, ensuring optimal performance and reducing wear on machinery components.



### **Bearing Pullers:**

#### **TMMR Reversible Two-Jaw Puller, TMMP Non-reversible Jaw Puller, Hydraulic Pullers, TMIP Series of Pullers, TMBS Long Pullers:**

SKF offers a variety of bearing pullers designed for easy and efficient removal of bearings, catering to diverse application needs.



### **Shaft Alignment Systems:**

#### **TKSA 41:**

SKF's shaft alignment system simplifies the alignment process, ensuring precision and reliability for rotating machinery.



### **Belt Alignment Tools:**

#### **TKBA 10, TKBA 20, TKBA 40:**

SKF's belt alignment tools enable accurate alignment of belt-driven systems, reducing wear and improving efficiency.



### **Condition Monitoring Instruments:**

**Infrared Thermometers TKTL11, TKTL 21, TKTL 31, TKTL 40:**

SKF's infrared thermometers allow quick and accurate temperature measurements, facilitating proactive maintenance and preventing equipment failures.



### **Tachometers TKRT 10, TKRT 21, TKRT 31:**

SKF's tachometers provide precise RPM measurements, essential for monitoring equipment performance and detecting abnormalities.



### **Electronic Stethoscope TMST 3:**

SKF's electronic stethoscope enables efficient condition monitoring by detecting and analysing machine vibrations, helping identify potential issues before they escalate.

**Trust SKF's maintenance tools and bearing greases to optimise your maintenance processes and keep your machinery running smoothly. Contact us today to learn how SKF can support your maintenance needs!**

## CONTACT US:

📞 +255 744 589 354

✉ [skf.info@karimjee.com](mailto:skf.info@karimjee.com)



EST 1825  
KARIMJEE